



*mf*  
MARIA FELEA



*mf*  
MARIA FELEA

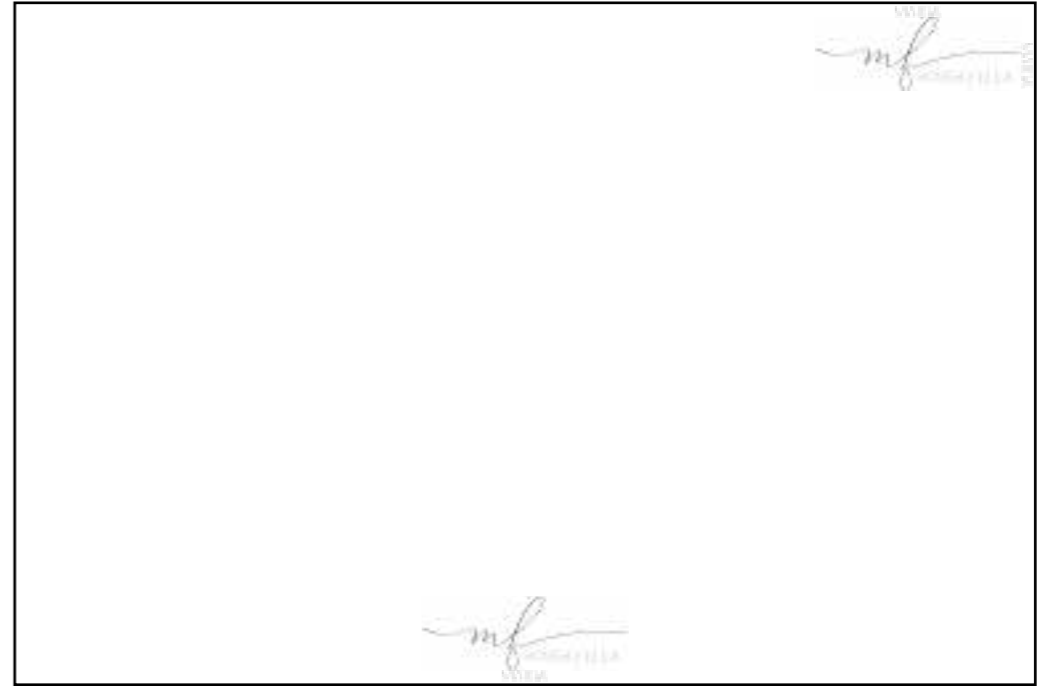
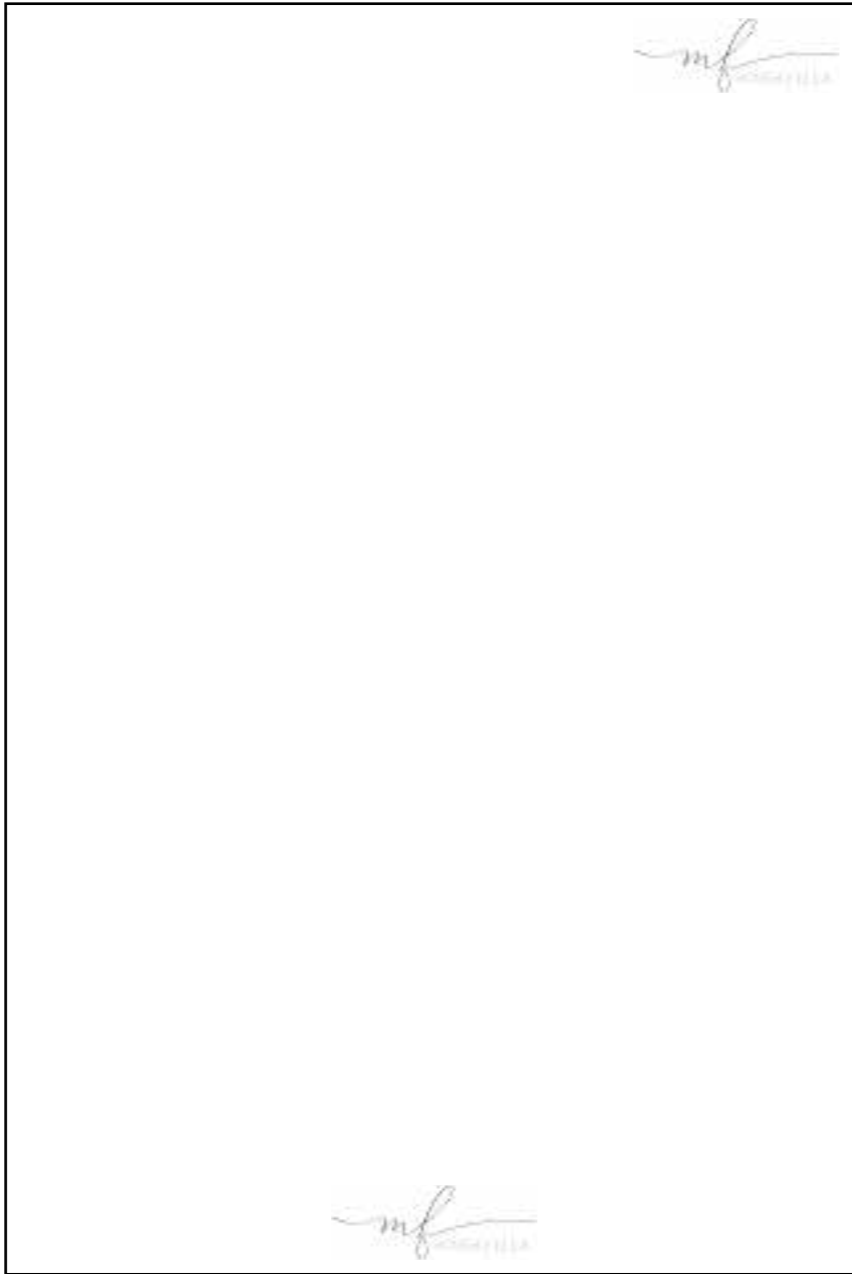
*mf*  
MARIA FELEA



Se impune păstrarea unui spațiu de protecție pentru logo.  
Mărimea acestuia este identificabilă prin poziționarea simbolului din logo în fiecare laterală.



Regula se păstrează și pentru logo-ul cu fundal colorat.



Logo positioning



*mf*  
MARIA FELEA

*iaamour*

COLLECTION

*iaamour*

COLLECTION

*mf*  
MARIA FELEA







*mf*  
MARIA FELEA



Regain love

mf  
MARIA FELEA

mariafelea.com





*mf*  
MARIA FELEA

*iaamour*  
COLLECTION





*iaamour*  
COLLECTION

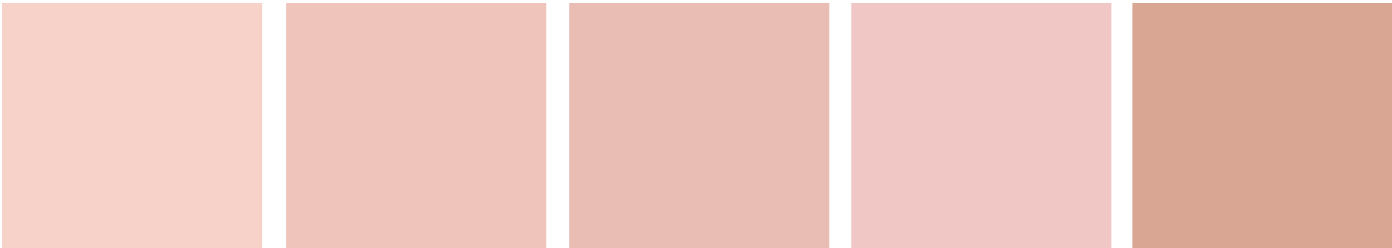
*mf*  
MARIA FELEA

*Your inner journey*  
SELF LOVE

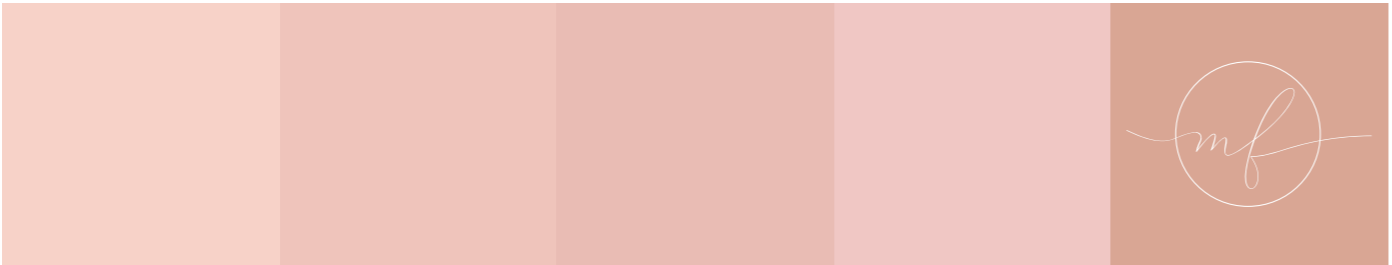
*iaamour*  
COLLECTION



# CULORI



<b>CMYK</b> (2%, 20%, 15%, 0%)	<b>CMYK</b> (4%, 25%, 20%, 0%)	<b>CMYK</b> (7%, 28%, 23% 0%)	<b>CMYK</b> (3%, 24%, 16%, 0%)	<b>CMYK</b> (14%, 37%, 37%, 0%)
<b>#f7d2c9</b> <b>RGB</b> (247, 210, 201)	<b>#f0c4hh</b> <b>RGB</b> (239, 197, 188)	<b>#e9hdh4</b> <b>RGB</b> (233, 189, 180)	<b>#f1c8c4</b> <b>RGB</b> (241, 200, 196)	<b>#d9a695</b> <b>RGB</b> (217, 16, 149)



Principal and secundar colors



*mf*  
MARIA FELEA



# Lato Hairline

*MindlineSlantDemo*

Lato Hairline font pentru body texts - se va folosi in zonele din online/offline cu mult text. Este foarte usor de citit si se armonizeaza foarte bine cu font-ul *MindlineSlantDemo*. Pentru Titluri si pentru evi-dentierea de informatii vom folosi Lato Hairline sau *MindlineSlantDemo*, în functie de caz. Pentru texte care vor fi puse peste imagini vom folosi

Lato Hairline/*MindlineSlantDemo*.

*MindlineSlantDemo* este un hand-writing font - va avea rolul de a da viata elementelor comunicate, de a arata latura umana a brandului.

*MindlineSlantDemo*

*ABCDEFGHIJKLMNOPQRSTUVWXYZ*

*0123456789*

*abcdefghijklmnopqrstuvwxyz*



# Lato Hairline

ABCDEFGHIJKLMNOPQRSTUVWXYZ

0123456789

abcdefghijklmnopqrstuvwxyz

*Your inner journey*



*mf*  
MARIA FELEA

mariafelea.com

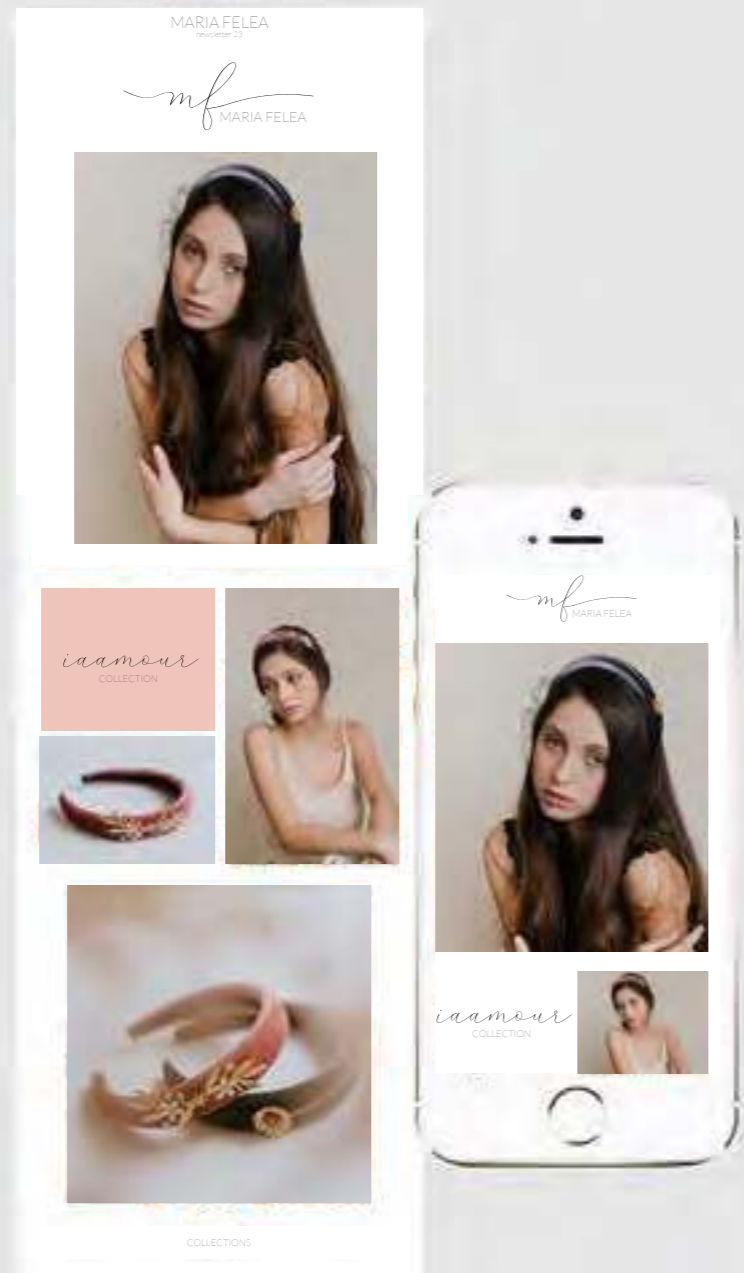


*Your inner journey*  
SELF LOVE

PACKAGING



# email template



*iaamour*  
COLLECTION

*mf*





# REGAINING LOVE

Regaining love is about finding the lost love, it is about believing in the existence of love and helping by all the meanings to regain it. Regaining love is about you, is about them, is about us. It is something towards every one of us must aim every day and must do our best to achieve it. Regaining love is a self promise to be happy again. Regaining love is about finding inner peace, the self-love in order to strengthen ourselves and give love back. Regaining love is that thing, that miracle in our lives that will offer us that unconditional happiness. Maria Felea will guide you on this journey of regaining love, will teach you, will help you step by step. The hair accessories and jewelry are just a symbol of this commitment of doing your best to regain love.



MARIA FELEA

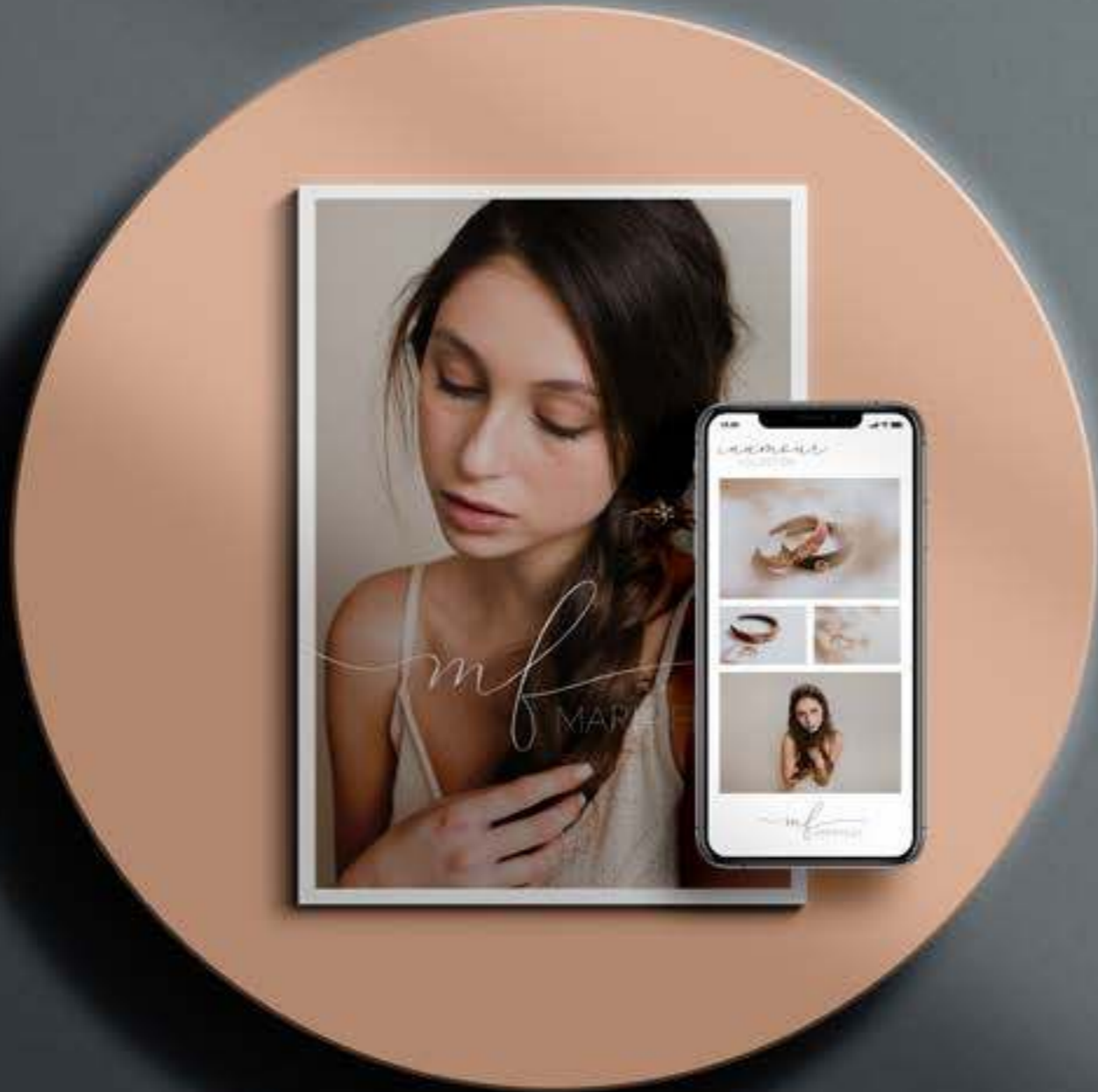




## VINTAGE FLORAL CROWN

A modern take on the vintage floral crown, this lovely headpiece features an assortment of brass gold plated flowers and leaves, adorned with ivory Swarovski pearls.

*mf*  
MARIA FELEA



*mf*  
MARIA FELEA

*mf*  
MARIA FELEA

